



PC-60k-1.25 Load Cell

Standard Features

- » ASTM E74 performance for compression: Lower Limit Factor (LLF) better than 0.01 %, Class A better than 4 % of capacity when used only in a single direction in compression.¹
- » ASTM E74 performance for tension: Lower Limit Factor (LLF) better than 0.02 %, Class A better than 8 % of capacity when used only in a single direction in tension.¹ If you are looking for better performance in tension, we offer the [PC-60k-1.5](#).
- » ISO 376 Class 0.5 for compression or better (Case C only; Case D varies by capacity)
- » Compression and/or tension modes
- » Direct reading calibration accuracy is typically around 0.05 % of capacity
- » Available accessories such as Quick-Change Tension Members, custom-cut protective cases, various indicators

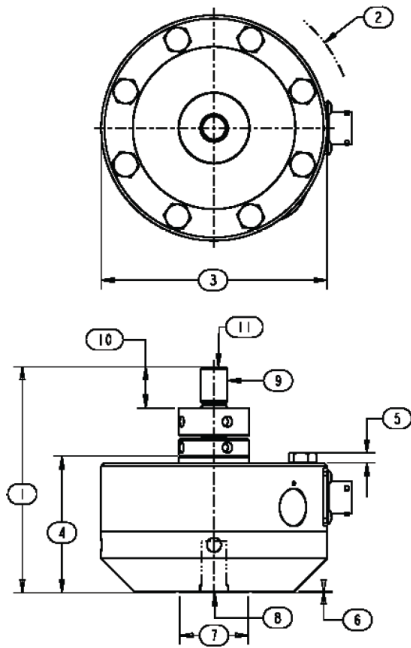
1. When the directions are combined, there may be a reduction in the loading range. The reduction varies by capacity, and the verified range of forces could increase to 20 % of capacity.



Technical Specifications

Specifications	Model - Capacity (lbf / kN)
	60K / 270
Accuracy	
Static Error Band, % R.O.	± 0.04
Non-Linearity, % R.O.	± 0.03
Hysteresis, % R.O.	± 0.04
Non-Repeatability, % R.O.	± 0.01
Creep, % Rdg / 20 Min.	± 0.025
Off-Center Load Sensitivity, %/in	± 0.1
Side Load Sensitivity, %	± 0.1
Zero Balance, % R.O.	± 1.0
Temperature	
Range, Compensated, °F	+15 to +115
Range, Operating, °F	-65 to +200
Sensitivity Effect, % Rdg / 100°F	0.08
Zero Effect, % R.O. / 100°F	0.08
Electrical	
Recommended Excitation, VDC	20
Input Resistance, Ω	350
Output Resistance, Ω	350
Sensitivity (R.O.), mV/V, Nominal	4
Insulation Bridge/Case, MegΩ	5000
Mechanical	
Safe Overload, % R.O.	± 150
Weight, lbs	13.5
Flexure Material	Steel

Dimensions



Dimensions	Inch
1	7.68
2	R3.50
3	6.06
4	4.50
5	0.31
6	0.03
7	3.00
8	1 1/2 - 12 2.00 Deep
9	1 1/2 - 12
10	1.5
11	R 6.00