

Standard Features

- » ASTM E74 performance: Lower Limit Factor (LLF) better than 0.02 %, Class A better than 8 % of capacity
- » ISO 376 Class 1 performance range
- » Compression-only and compression/tension models available
- » Capacity: 300,000 lbf to 1,000,000 lbf
- » Available accessories such as: tension rods, tension adapters, load pads, and bearing blocks
- » Available custom-cut protective cases available

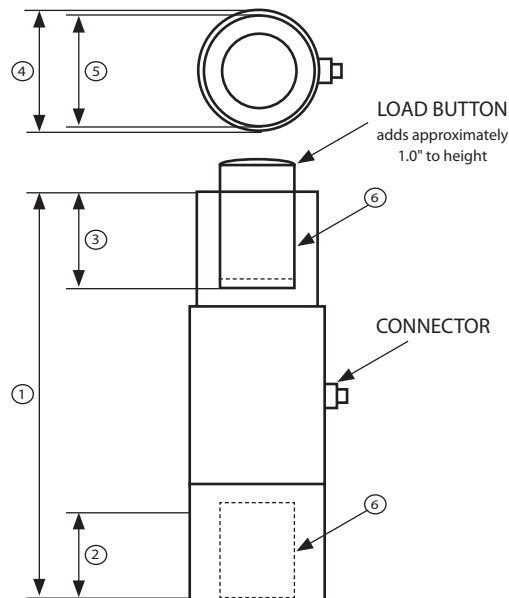


Technical Specifications

Specifications	Model
	High Capacity Single - Column Load Cells
Accuracy	
Non-Linearity, % R.O.	± 0.15
Hysteresis, % R.O.	± 0.05
Non-Repeatability, % R.O.	± 0.03
Creep, % Rdg / 20 Min.	± 0.05
Zero Balance, % R.O.	± 1.0
Temperature	
Compensated Range, °F	+32 to +132
Operating Range, °F	-30 to +200
Effect on Output, % Rdg / 100°F	0.003
Effect on Zero, % R.O. / 100°F	0.003
Electrical	
Recommended Excitation, VDC	10
Input Resistance, Ω	350
Output Resistance, Ω	350
Sensitivity (R.O.), mV/V, Nominal	2.0
Insulation Bridge/Case, MegΩ	> 5000 at 50 VDC
Mechanical	
Capacity	200,000 -1,000,000 lbf
Safe Overload, % R.O.	150
Flexure Material	Steel
Connector	MS3102A-14S-5P



Dimensions



Dimensions	Model - Capacity (lbf / kN)					
	200k / 890	300k / 1335	500k / 2225	600k / 2670	700k / 3115	1000k / 4450
1 – Overall Height (in/mm)	14 / 355.6	16.50 / 419.10	21.26 / 540	23.25 / 590.55	25.50 / 647.70	27.80 / 706.12
2 – Bottom Thread Depth (in/mm)	3 / 76.2	3.75 / 95.25	4.50 / 114.30	5.00 / 127	5.50 / 139.70	6.50 / 165.10
3 – Top Thread Depth (in/mm)	3 / 76.2	3.75 / 95.25	4.50 / 114.30	5.00 / 127	5.50 / 139.70	6.50 / 165.10
4 – Outer Diameter (in/mm)	5 / 127	5.50 / 139.70	6.00 / 152.40	7.00 / 177.80	7.50 / 190.50	9.50 / 241.30
5 – Inner Diameter (in/mm)	4.5 / 114.3	5.00 / 127	5.50 / 139.70	6.50 / 165.10	7.00 / 177.80	9.00 / 228.60
6 – Thread (in-TPI)	3"-12	3.5"-12	4"-12	4.5"-8	5"-8	6"-8

Wiring

High Capacity Single - Column	
Connector Pin	Description
Pin A	Excitation +
Pin B	Signal +
Pin C	Signal -
Pin D	Excitation -